

# CGM Extension for Petrel\*

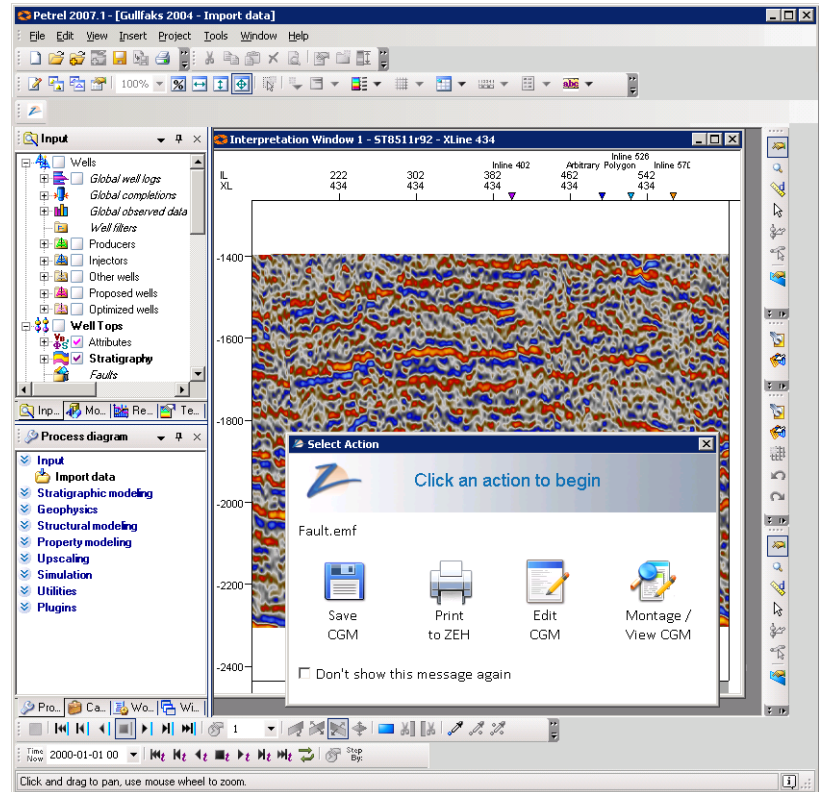


## Overview

CGM has been an industry standard graphics file format for G&G software since the inclusion of CGM\*PIP and CGM+ in the early 1990's. This file format is still the most interchangeable graphics file format in mainstream G&G visualization products and graphics software applications

ZEH's CGM Extension uses the Ocean\* application development framework to add CGM capability to Petrel\* seismic to simulation software. Geoscientists now have the ability to export Petrel graphics to CGM and import them into their preferred graphics applications, or use them with any printing solution that supports CGM.

Additionally, CGM Extension provides an integrated path to ZEH's printing and montaging solutions. Users have the capability to seamlessly submit files to a ZEH print server for enhanced printing capabilities. Users also have the option to automatically populate and open a canvas in ZEH Montage as a means to edit, annotate, and montage with additional raster or CGM files.



## Technical Information

### Required Software

- Petrel 2007

### Optional Software

- PLOT EXPRESS version 4.5 or higher for printing to ZEH
- ZEH Montage Professional 2.1 for editing/montaging CGM files

### Supported Views

- Version 2.1 - (Petrel 2007.1) Supports EMF exporting for all views except 2D and 3D Window.
- Version 2.2 - (Petrel 2007.1.2) Supports EMF creation via the plug-in for the Function, Interpretation, Intersection, Map, and Well Section Windows.

### Supported Platforms

Windows 2000, XP (SP2), and XP x64

## Benefits

- Integrates into Petrel as a plug-in using Ocean.
- Extends Petrel's graphics capabilities to include CGM output enabling organizations to leverage existing applications and printing solutions.
- Provides the ability to move forward with new technology and continue to support existing standards.
- Provides enhanced printing capabilities when used in conjunction with ZEH printing solutions.
- Creates a seamless path to ZEH Montage for editing, annotating, and montaging CGM files with other images.



[www.zeh.com](http://www.zeh.com)

United States (Headquarters)  
ZEH Software, Inc.  
16420 Park Ten Place, Suite 520  
Houston, TX 77084 USA  
+1 281 589 7757  
+1 281 497 2141 Fax

United Kingdom  
ZEH Software Ltd.  
Dorking Business Park  
Station Road  
Dorking, Surrey RH4 1HJ  
United Kingdom  
+44 (0) 1306 740105  
+44 (0) 1306 740541 Fax

Perth, WA, Australia  
ZEH Software Ltd.  
+61 449 767 449  
[australia@zeh.co.uk](mailto:australia@zeh.co.uk)

PLOT EXPRESS is a registered trademark of ZEH Software, Inc. \* Marks of Schlumberger. All other trademarks are the property of their respective owners and/or licensors. 05/2008